

# On the identity of the spider *Emertonius exasperans* Peckham & Peckham (Araneae: Salticidae)

F. R. Wanless

Department of Zoology, British Museum (Natural History), Cromwell Road, London SW7 5BD

## Introduction

The little known genus *Emertonius* Peckham & Peckham 1892 was formerly comprised of two species: *Emertonius exasperans* Peckham & Peckham, the type-species from Java and *E. rufescens* Simon from Madagascar. Both species were known only from females that were characterized by the 'curiously' shaped carapace. *E. rufescens*, now known from both sexes, is considered to belong to the genus *Myrmarachne* Macleay and is described elsewhere (Wanless, 1978). The discovery of a male from the Philippines, believed to be conspecific with *E. exasperans*, shows that this is also a species of *Myrmarachne* and that the genus *Emertonius* is not valid.

In the following redescription of *E. exasperans* the format and abbreviations are those given by Wanless (1978).

### *Myrmarachne exasperans* (Peckham & Peckham) comb. nov.

(Figs 1, 2)

*Emertonius exasperans* Peckham & Peckham, 1892 : 54, pl. IV, figs 8, 8a, 8b, ♀ not ♂. Female LECTOTYPE (here designated) Java, Bantam (MCZ, Harvard) Examined. Simon, 1901 : 498, 499, 503, 504, fig. 5951. Roewer, 1954 : 939. Bonnet, 1956 : 1653. Prószyński, 1971 : 400.

DIAGNOSIS. *M. exasperans* is a distinctive species and the form of the carapace (Figs 1A, F; 2A, E) is diagnostic.

MALE (formerly undescribed). *Carapace* (Fig. 1A, F): punctured-reticulate with piliferous papillae; dark reddish brown; clothed with white hairs forming lateral and submarginal bands on the sides. *Eyes*: anteriors subcontiguous with apices procurved in frontal view, fringed with white hairs. *Clypeus*: white haired. *Chelicerae* (Fig. 1A, D): rugulose with furrows; orange-brown with brown-black lateral keels and with a distal violet sheen under some lights; fang apophysis lacking. *Maxillae and labium*: yellow-brown. *Sternum*: (Fig. 1C) yellow-brown. *Abdomen*: mottled pale yellow and black; scuta dark orange-brown tinged with blackish, sparsely clothed with fine dark orange hairs and margined with distinctive white haired fringes. *Legs*: femora I slightly enlarged. Light yellow-brown but tibiae I and femora I orange-brown. Ventral spination of legs I: metatarsi 2-2, tibiae 2-2-2-2-2, patellae 1. *Palp* (Fig. 1B, E): tibial apophysis with proximal ventral flange; seminal reservoir doubled, probably as a result of folding within the tegulum.

*Dimensions*: total length 5.0 mm, carapace length 2.4 mm. *Ratios*: AM : AL : PM : PL :: 12 : 7 : 1.4 : 7.5; AL-PM-PL: 9-7; width of eye row I/ carapace width at that point 1.06, width of eye row III/ carapace width at that point 1.08, quadrangle length/ carapace length 0.48, cheliceral length/ carapace length 0.90, tibia + patella IV/ carapace length 0.88 (based on 1 ♂).

FEMALE (Fig. 2A, E). *Carapace*: covered with piliferous papillae but grading to rugulose behind anterior eyes; dark reddish orange; a longitudinal white haired band on the head and fore part of thorax with white haired lateral bands and a tuft of brownish hairs on the 'hump'. *Eyes*: more or less as in ♂. *Clypeus*: white haired. *Chelicerae*: reddish orange, shiny, with 6 promarginal and 8-10 retromarginal teeth. *Maxillae and labium*: orange-brown. *Sternum* (Fig. 2B): pale yellow-brown. *Abdomen*: yellow-brown with dark brown dorsal pattern; light parts clothed with pale yellowish hairs with scanty covering of long and short orange-brown hairs in dark areas. *Legs*: legs I light yellowish with brownish streaks on outside of tibiae and patellae. Other legs light yellowish but legs IV with brownish streaks on outside of tibiae, patellae, femora and trochanters.

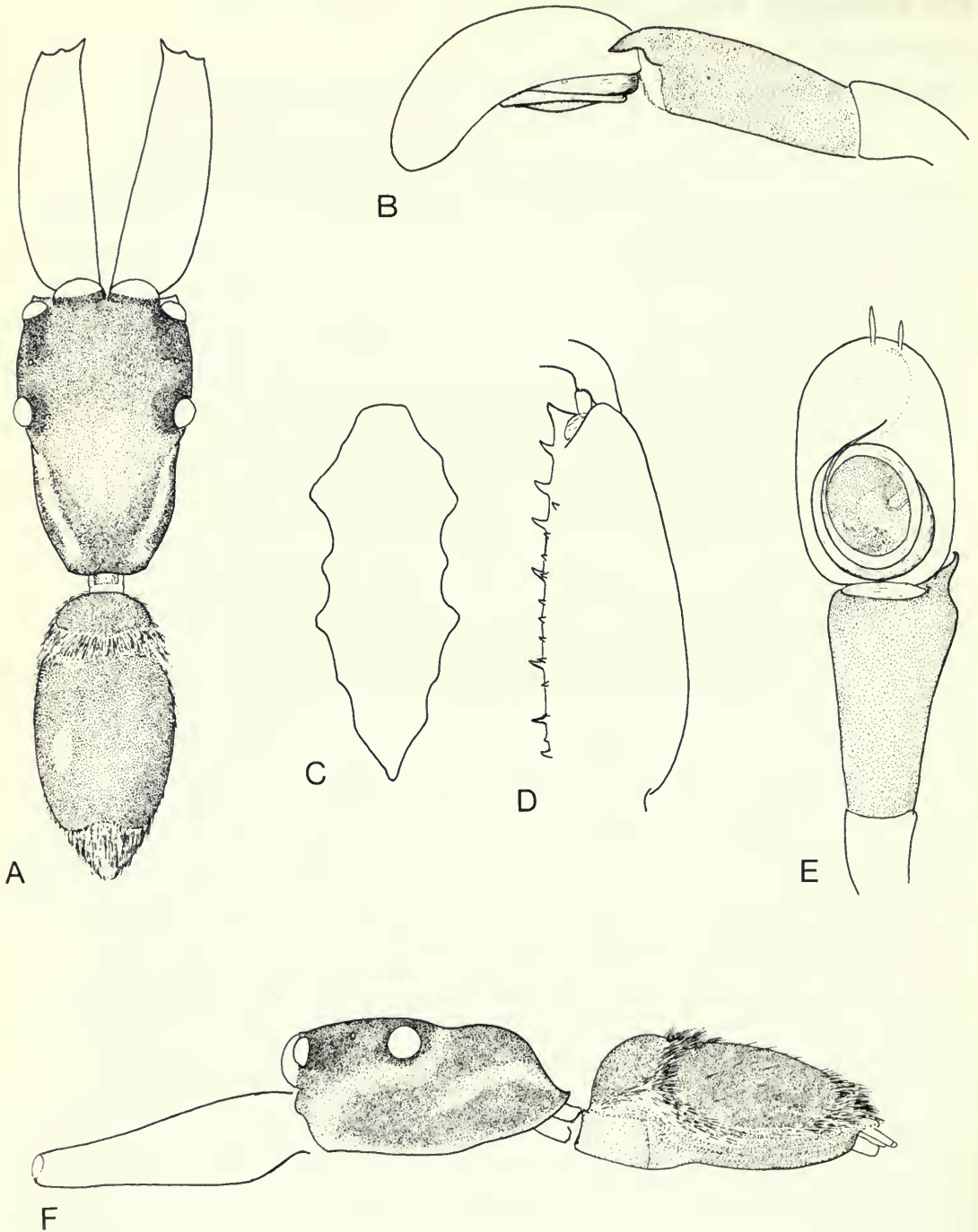
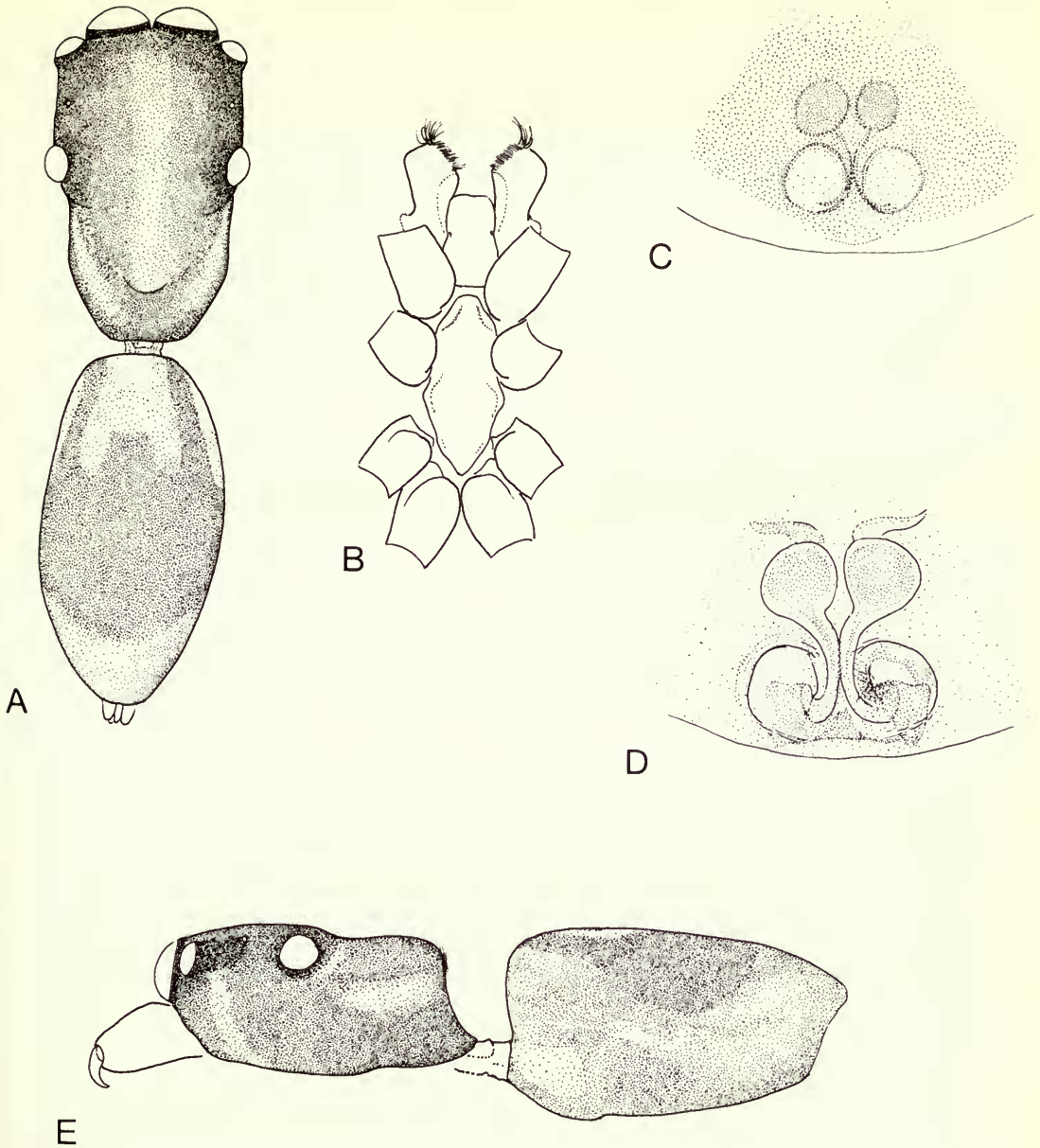


Fig. 1 *Myrmarachne exasperans* (Peckham & Peckham), ♂: (A) dorsal view; (B) palp, lateral view; (C) sternum; (D) chelicera, ventral view; (E) palp, ventral view; (F) lateral view.



**Fig. 2** *Myrmarachne exasperans* (Peckham & Peckham), ♀: (A) dorsal view; (B) sternum, coxae, maxillae and labium; (C) epigyne; (D) vulva, ventral view; (E) lateral view.

Ventral spination of legs I: metatarsi 2-2, tibiae 2-2-2, patellae 0; retroventral spines the strongest. *Epigyne* (Fig. 2C, D): median pouch poorly defined; openings circular; spermathecae rounded and simple; distal seminal ducts broad, poorly defined.

*Dimensions*: total length 5.2 mm, carapace length 2.4 mm. *Ratios*: AM : AL : PM : PL :: 13 : 8 : 2 : 8; AL-PM-PL: 8-7; width of eye row I/ carapace width at that point 1.06, width of eye row III/ carapace width at that point 1.05, quadrangle length/ carapace length 0.49, tibia + patella IV/ carapace length 0.93 (based on 2 ♀).

**BIOLOGY.** Unknown.

DISTRIBUTION. Java, Philippines.

MATERIAL EXAMINED. Lectotype ♀, data given in synonymy. JAVA: Mt Tenggu, 1 ♀ (MNHN, Paris). PHILIPPINES: Palawan Manialingajan Pinigisan, 600 M, 12.viii.1961, 1 ♂, Noona Dan Exp. 1961-62 (BMNH).

REMARKS. The structure of the genitalia and the horizontal chelicerae of the male shows that *E. exasperans* belongs to *Myrmarachne* but the male abdominal fringes are not typical of the genus. Unfortunately, Oriental species of *Myrmarachne* are poorly known and the affinities of this species are uncertain. It resembles *E. rufescens* in body form but there are differences in the genitalia and it cannot be readily placed into any of the Ethiopian species groups proposed by Wanless (1978).

### Acknowledgements

I wish to thank Dr H. W. Levi (MCZ, Harvard) and M. M. Hubert (MNHN, Paris) for the loan of specimens.

### References

- Bonnet, P. 1956. *Bibliographia Araneorum* 2 : 919-1925. Imprimerie Douladoure, Toulouse.
- Peckham, G. W. & Peckham, E. G. 1892. Ant-like spiders of the family Attidae. *Occ. Pap. Wis. nat. Hist. Soc.* 2 (1) : 1-83.
- Prószyński, J. 1971. Catalogue of Salticidae (Aranei) specimens kept in major collections of the world. *Annls zool. Warsz.* 28 : 367-519.
- Roewer, C. F. 1954. *Katalog der Araneae*. 2, Abt. B : 924-1290. Institut Royal des Sciences Naturelles de Belgique, Bruxelles.
- Simon, E. 1901. *Histoire Naturelle des Araignées* 2 (3) : 381-668. Roret, Paris: Libraire Encyclopédique.
- Wanless, F. R. (1978). A revision of the spider genera *Belippo* and *Myrmarachne* (Araneae : Salticidae) in the Ethiopian region. *Bull. Br. Mus. nat. Hist. (Zool.)* 33 (1) : 1-139.